

- 300.00 MHz IF SAW Filter / 23.55 MHz Bandwidth
- Revision 1: 29 Oct. 2007

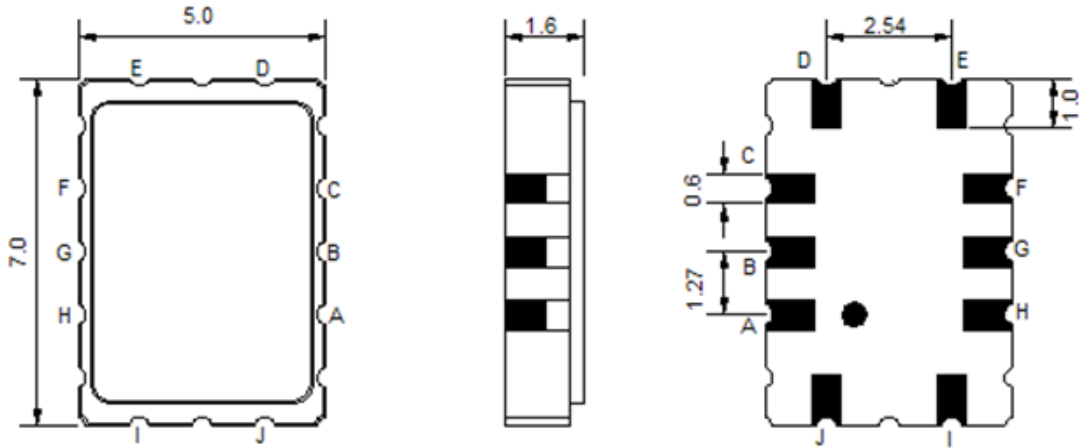
Electrical Characteristics

MAXIMUM RATING				
PARAMETERS DESCRIPTION	UNIT	MINIMUM	TYPICAL	MAXIMUM
Operating Temperature Range	°C	-30	-	80
Storage Temperature Range	°C	-40	-	85
Maximum DC Voltage	V	-	-	10
Maximum Input Power	dBm	-	-	10
Source Impedance (single ended) ⁽¹⁾	Ω	-	50	-
Load Impedance (single ended) ⁽¹⁾	Ω	-	50	-
Package type & size	S			
Length x Width	mm ²	-	7.0 x 5.0	-
Height	mm	-	-	1.6

ELECTRICAL SPECIFICATION				
PARAMETERS DESCRIPTION	UNIT	MINIMUM	TYPICAL	MAXIMUM
Center Frequency (Fo)	MHz	-	300.0	-
Insertion Loss at Fo	dB	-	10.3	15.0
Temperature Coefficient	ppm/°C	-	-86	-
Amplitude Ripple Variation	dB _{p-p}	-	0.7	1.5
Group Delay Variation	nsec	-	50	100
Absolute Delay at Fo	µsec	-	0.51	1.0
Bandwidth at -1.0 dB	MHz	20.0	21.95	-
Bandwidth at -3.0 dB	MHz	21.0	23.55	-
Bandwidth at -40.0 dB	MHz	-	-	31.0
Relative Attenuation:				
Lower sidelobe	dB	40	-	-
Upper sidelobe	dB	40	-	-
Ambient Temperature	°C	-	25	-

Notes : (1) With Matching Network (Ref. Testing Environment Circuit as shown below).
Those impedances could be modified with different impedance values and/or structures, if necessary.

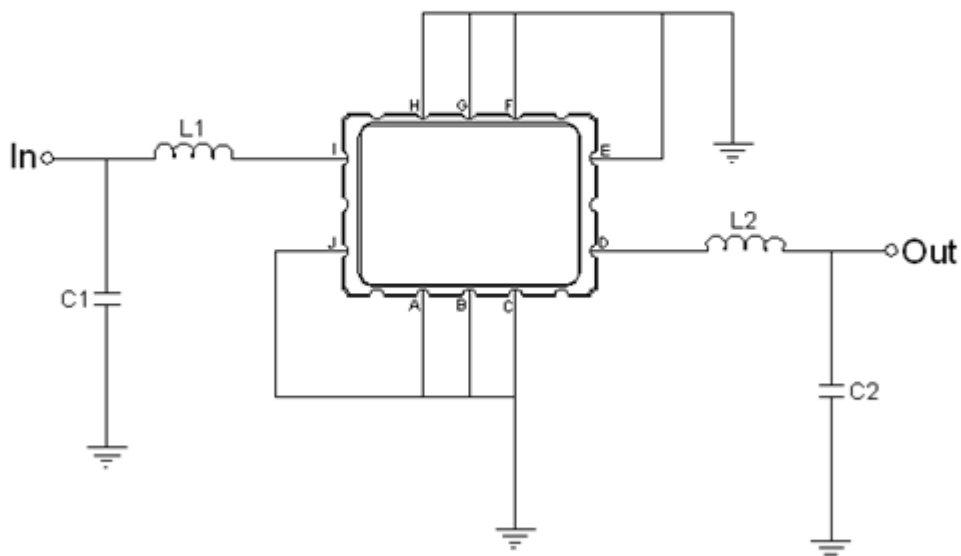
Package Dimensions



Pin Description

A, B, C, E, F, G, H, J	Ground
I	Input
D	Output

Testing Environment



Test Fixture & Values

Input	L1=28nH , C1=16pF
Output	L2=25nH , C2=18pF
Source/Load Impedance	50 Ω

Frequency Characteristics

Frequency Response

